

Fountain Retreat



Property Features

Investors take note ... Fountain Retreat, Bay County, Florida's best real estate value, is available for only \$2,650 per acre! This 230-acre property takes its name from the community of Fountain located just 15 minutes north of Panama City's city limits - via U.S. Highway 231. Given the growth that is occurring at both the county and state level, Fountain Retreat offers excellent possibilities for price appreciation. While the financial considerations are compelling enough, an owner can also enjoy any number of recreational pursuits including hunting, fishing, or ATV riding.

The lay-of-the-land of Fountain Retreat harkens back to what could be described as "Old Florida". Open savannahs mix with mature natural pines, young longleaf pines, and saw palmetto that emerge from the sandy soils. A pretty 1 ¼ acre pond would make a nice homesite and a small creek traverses the property providing a water source for game. Two food plots are maintained for hunting with deer and turkey being the primary game.

OWNER FINANCING AVAILABLE!

At a Glance:

Acreage:
230± acres

Asking Price:
\$2,550 per acre

Location:
Bay County, Florida

Special Attributes:

- Value-Priced
- Appreciation Potential
- Old Florida Feel
- Recreational Opportunities
- Near Beaches & Amenities



Arnie Rogers, *Licensed Real Estate Broker*
Verdura Realty, LLC • 316 Williams Street • Tallahassee, FL 32303
Cell: 850.491.3288 • Email: arogers@verduraproperties.com
www.VerduraProperties.com



Fountain Retreat

Property Features *continued*

While Fountain Retreat has a rural feel, there are many nearby amenities including miles of some of the world's most beautiful beaches. In addition, there are championship and public golf courses, state and county parks as well as arts, entertainment, and shopping.

The convenience of reaching the property when traveling from longer distances is easy as well. The Northwest Florida Beaches International Airport (served by Delta, Southwest, and United Airlines) is only 29 miles away while Interstate 10 is reached just 23 miles to the north.

OWNER FINANCING AVAILABLE!

At a Glance:

Acreage:
230± acres

Asking Price:
\$2,550 per acre

Location:
Bay County, Florida

Special Attributes:

- Value-Priced
- Appreciation Potential
- Old Florida Feel
- Recreational Opportunities
- Near Beaches & Amenities

**PRICE
REDUCED**



Arnie Rogers, Licensed Real Estate Broker
Verdura Realty, LLC • 316 Williams Street • Tallahassee, FL 32303
Cell: 850.491.3288 • Email: arogers@verduraproperties.com
www.VerduraProperties.com



Fountain Retreat

Photos



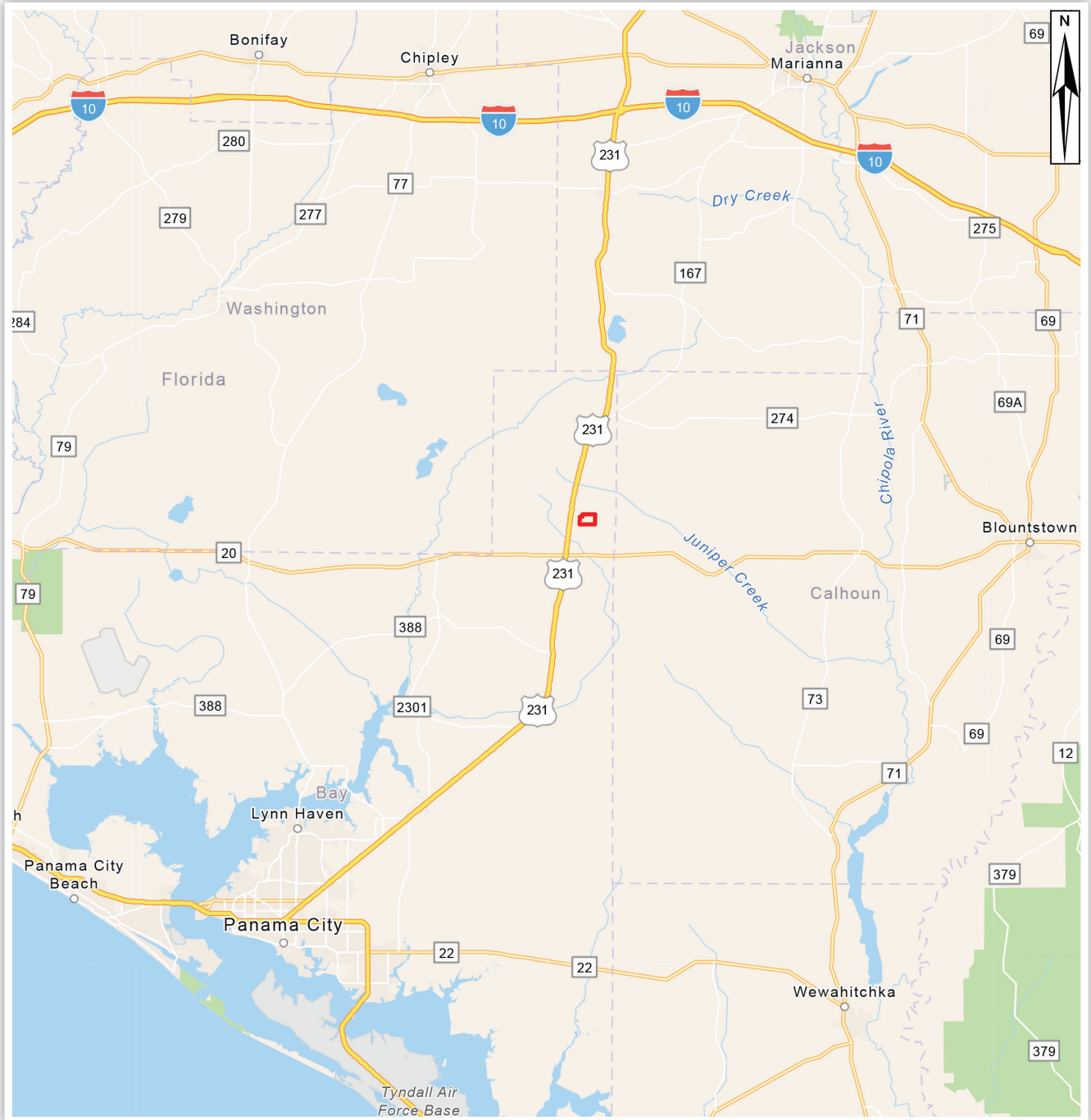
Arnie Rogers, Licensed Real Estate Broker
Verdura Realty, LLC • 316 Williams Street • Tallahassee, FL 32303
Cell: 850.491.3288 • Email: arogers@verduraproperties.com
www.VerduraProperties.com



Please note that while all information is believed to be reliable, none is guaranteed.

Fountain Retreat

Location Map



Arnie Rogers, Licensed Real Estate Broker
Verdura Realty, LLC • 316 Williams Street • Tallahassee, FL 32303
Cell: 850.491.3288 • Email: arogers@verduraproperties.com
www.VerduraProperties.com



Please note that while all information is believed to be reliable, none is guaranteed.

Fountain Retreat

Aerial Map



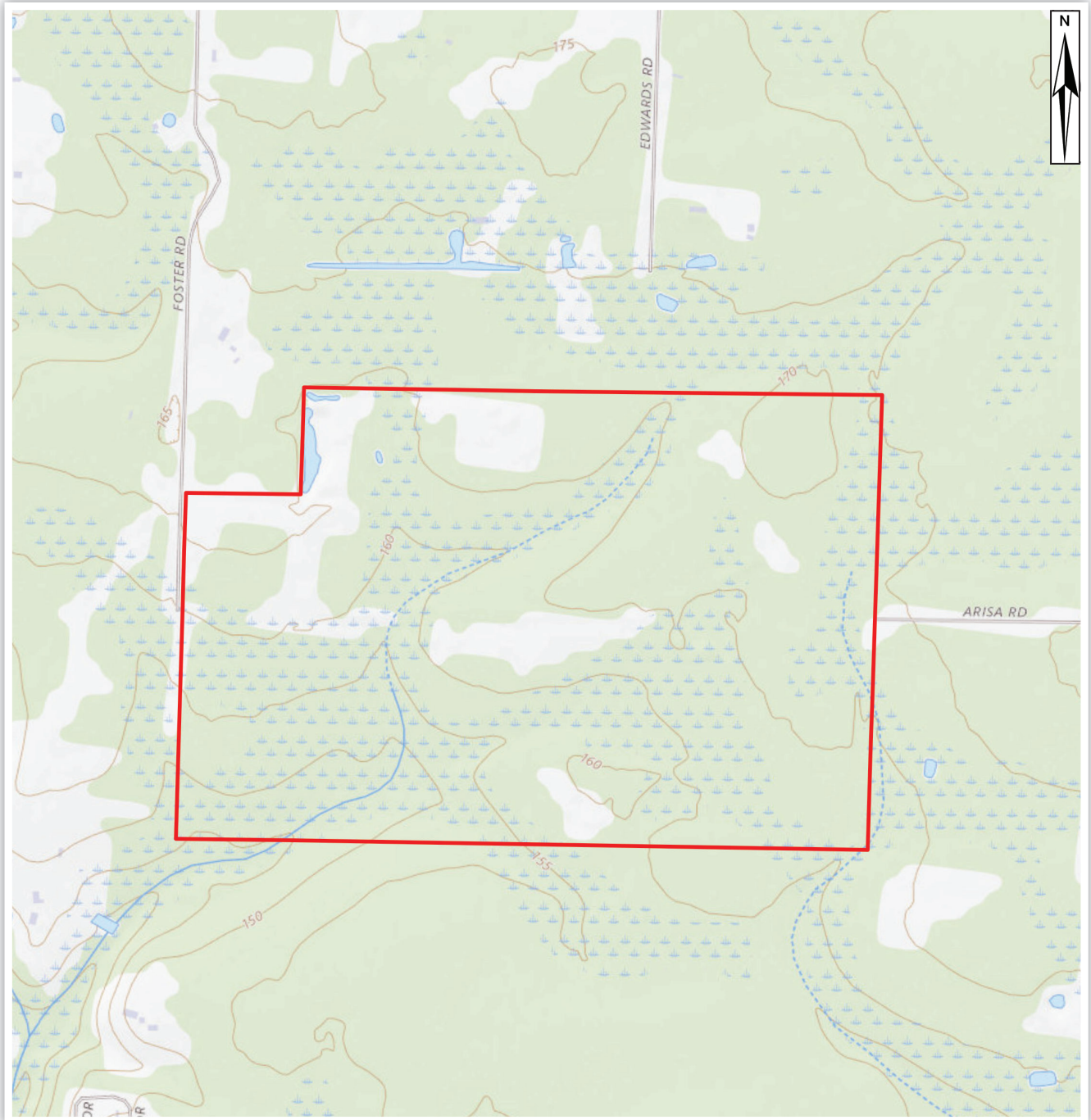
Arnie Rogers, *Licensed Real Estate Broker*
Verdura Realty, LLC • 316 Williams Street • Tallahassee, FL 32303
Cell: 850.491.3288 • Email: arogers@verduraproperties.com
www.VerduraProperties.com



Please note that while all information is believed to be reliable, none is guaranteed.

Fountain Retreat

Topo Map



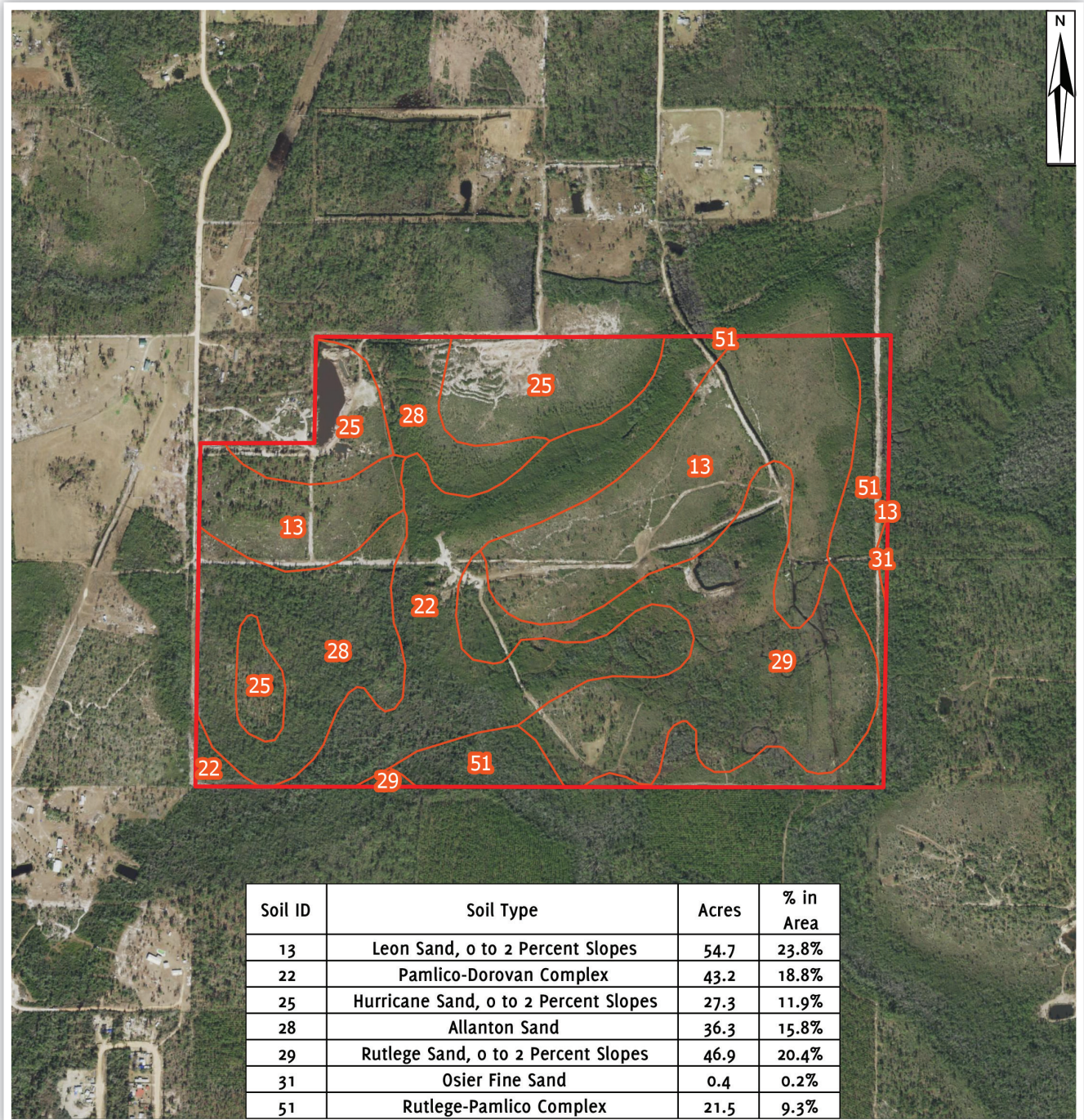
Arnie Rogers, Licensed Real Estate Broker
Verdura Realty, LLC • 316 Williams Street • Tallahassee, FL 32303
Cell: 850.491.3288 • Email: arogers@verduraproperties.com
www.VerduraProperties.com



Please note that while all information is believed to be reliable, none is guaranteed.

Fountain Retreat

Soil Map



Arnie Rogers, Licensed Real Estate Broker
Verdura Realty, LLC • 316 Williams Street • Tallahassee, FL 32303
Cell: 850.491.3288 • Email: arogers@verduraproperties.com
www.VerduraProperties.com



Please note that while all information is believed to be reliable, none is guaranteed.